



01905 794 875



StartSafety.uk



sales@startsafety.uk

SpeedFinder Radar Sign - Speed Roundel + SLOW DOWN



Specifications

Digit height 110mm

Roundel 300mm diameter

Case dimensions (excluding bracket) 430x660x110 (wxhxd)

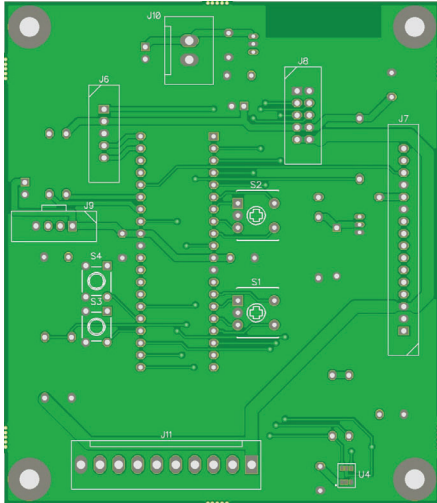
Weight

LED brightness 20,000 mcd

Power consumption including Radar 6mA quiescent, 1A typical when triggered

(daylight)

Power input 11V – 13.8V to display from Battery/mains PSU/Battery backed mains PSU



Sign Setup

There are 2 rotary switches and 2 push button switches on the rear of the PCB. The rotary switches are labelled S2 and S1. The push buttons are labelled S4 and S3. The rotary switch positions are marked 0,1,2,3,4,5,6,7,8,9,A,B,C,D,E,F.

Switch position	S2 Speed threshold	S1 Display duration (Secs)
0	Always show	Stay on
1	5	0.5
2	10	1
3	15	1.5
4	20	2
5	25	2.5
6	30	3
7	35	3.5
8	40	4
9	45	4.5
A		5
B		5.5
C		6
D		6.5
E		7
F		7.5

The settings can be verified by pushing one of the push buttons on the back of the board, S4 (top button) will show the settings for speed (top rotary switch) and S3 (bottom button) will show the settings for duration.