

## Technical Sheet | GS6 Guardian Goalpost Kit



**Crossbar and  
Ballast Block Kit**



**Bunting and  
Galvanised Steelbase Kit**

### GS6 System Kits

The GS6 Guardian Goalposts are used to warn vehicles to the dangers of overhead cables, bridges and power lines, 100% compliant with the HSE GS6 Guidelines.

#### The New GS6 Pole

Our GS6 compliant poles are the most advanced on the marketplace. The tube is stronger with more prominent red and light-storing white sections, meaning the kit is highly visible from distance. Our new "anti-pinch" clamping system makes it even easier to extend the GS6 Kit to your required height.

### Specifications

**Conductivity:** Multi layered Fibreglass insulated to over 75kv

**Clamping:** New alloy lever – Robust "anti-pinch" clamping system

**Sections:** Five prominent red and luminous light-storing white UV tolerant sections

**Collapsed Length:** 6ft

**Extended Length:** 24ft

**Tube Sizes:** 50mm diameter base section

**Weight:** 3.5kg per pole



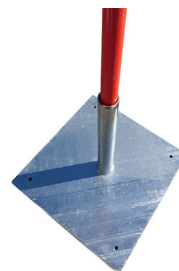
### Base Options

The base options are imperative for safe and secure functionality. Our galvanised steel bases are 13kg and we recommend anchoring the base with sandbags. Alternatively, you can fix the bases in place using anchor bolts with the 4 accessible holes.

For maximum security, the new state of the art Ballast Blocks are the safest option and are fully windspeed tested by MIRA. You can fill the Ballast Block with water to yield 110kg in block weight for a robust stability.

In the unlikely case of requiring even more stability; sand, gravel and concrete are viable filling options for the absolute maximum stability.

**Steel Base**



**Ballast Block**



### Height Restriction Methods

There are two types of height restriction that we offer.

**Option 1 – Red and White Cable Bunting, 82ft in length.**

**Option 2 – Telescopic Crossbar:**

The telescopic crossbar is the most secure method of height restriction. The pole is made from fibreglass and has the same clamping system as the GS6 poles. The crossbar allows the operator to open the gateway up to 25ft in width. Included is a simple elbow system to connect the crossbar to the poles, which is quick and flexible to cope with natural motions that occur in varying weather conditions.



### Wind Speed Tested

Safety is of paramount importance when using our GS6 barriers. Our wind speed tested kit gives you that extra reassurance of the systems ability and safety in operation. The combination of our GS6 poles and the MIRA tested Ballast Blocks gives you the maximum security, even in gale force winds.



#### Fluid Safety Guarantee

Our kits are covered by our excellent **2 Year Warranty.**

If you ever have an issue with your GS6 Kit, **give us a call** and we sort it for you.

