

PRODUCT DOCUMENTATION

EVOLIS VISION

THE STATE-OF-THE-ART
RADAR SPEED SIGN

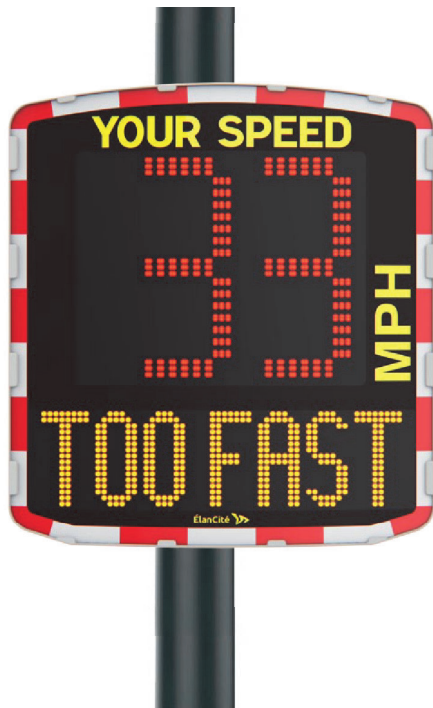


START **SAFETY**®

sales@startsafety.uk
startsafety.uk

THE WORLD'S MOST FREQUENTLY CHOSEN MODEL

Accuracy, striking visibility, reliability in all conditions, easy to install, the EVOLIS Vision radar speed sign boasts a host of advantages that have made it an international benchmark: nearly 20,000 town councils have adopted it and there are over 45,000 units in operation worldwide.



1 An impactful display making it the most effective of radars

- Greater visibility meaning earlier driver awareness
- Customizable messages to match your priorities
- Accurate, long-range Doppler radar antenna (300 meters)

2 Connected radar for high-performance analysis

- Traffic data recorded in both directions
- A software package for analyzing your traffic data
- Various connectivity options

3 Durability and long-term reliability

- Extremely durable housing
- Robust front face
- Two-year parts and labour guarantee
- Extended warranty for your peace of mind

4 Simple, safe installation

- Easy installation built into the design
- Can be configured directly on the appliance
- Four power supply modes to suit sites of all kinds
- Lightweight: only one person needed for installation or relocation

TESTIMONIALS FROM OUR CUSTOMERS

I have to say that we are absolutely delighted with the new device and we have had lots of positive comments from residents who are also very impressed. I am sure we will be placing a further order with you in the New Year.

Mr Craig Bowne, Councillor to Alderley Edge Parish Council (Cheshire)

A STRIKING DISPLAY, MAKING IT THE MOST EFFECTIVE RADAR

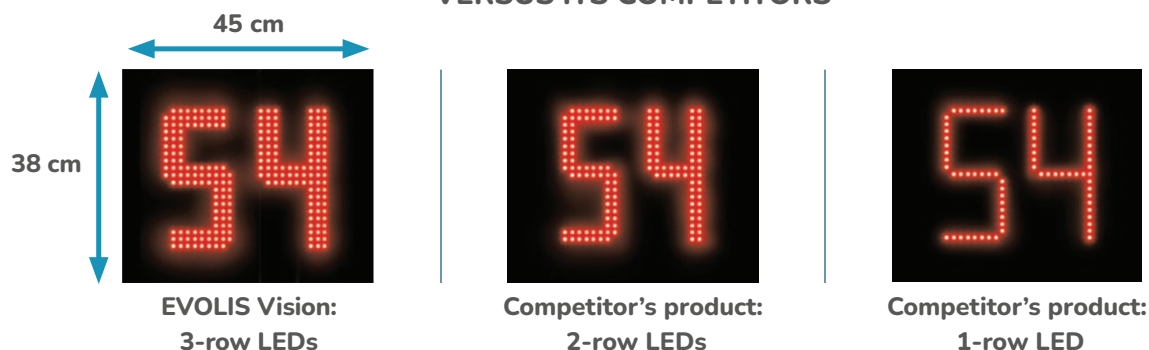
Accurate is fine, but unmissable is better. With a 300 meters vehicle detection range and optimum visibility up to 250 meters, EVOLIS Vision is considered the best performing and most safety-inducing radar on the market!

Dual display: speed figures and warning messages

EVOLIS Vision has 2 displays: **the first displays the speed detected by the Doppler antenna**. The speed display is made up of 3 rows of LEDs: a maxi format and a high resolution which greatly increase visibility and the psychological impact on the driver.



EVOLIS VISION'S VISUAL PERFORMANCE VERSUS ITS COMPETITORS



The second display, at the bottom, can be used to display text that can be fully customised according to speed. EVOLIS Vision also has a wide range of pre-recorded messages and pictograms.



With its **large matrix** (16 x 64 cm), the EVOLIS Vision radar's text display is a major asset toward achieving greater impact on motorists and inciting them to slow down.

Discover also EVOLIS Mobility!

The version without text display of EVOLIS Vision (with a screen-printed text). Contact us for more information!



Customizable messages according to your priorities

EVOLIS Vision adapts to the stretch of road you want to make safe. The “Full LED” text display matrix lets you customize messages to suit specific locations or periods, e.g., protection of pupils at school break-up times. You can also alternate two or three flashes with a special message to grab the attention of drivers used to driving past the display without noticing. Outside these specific times, standard messages are resumed.

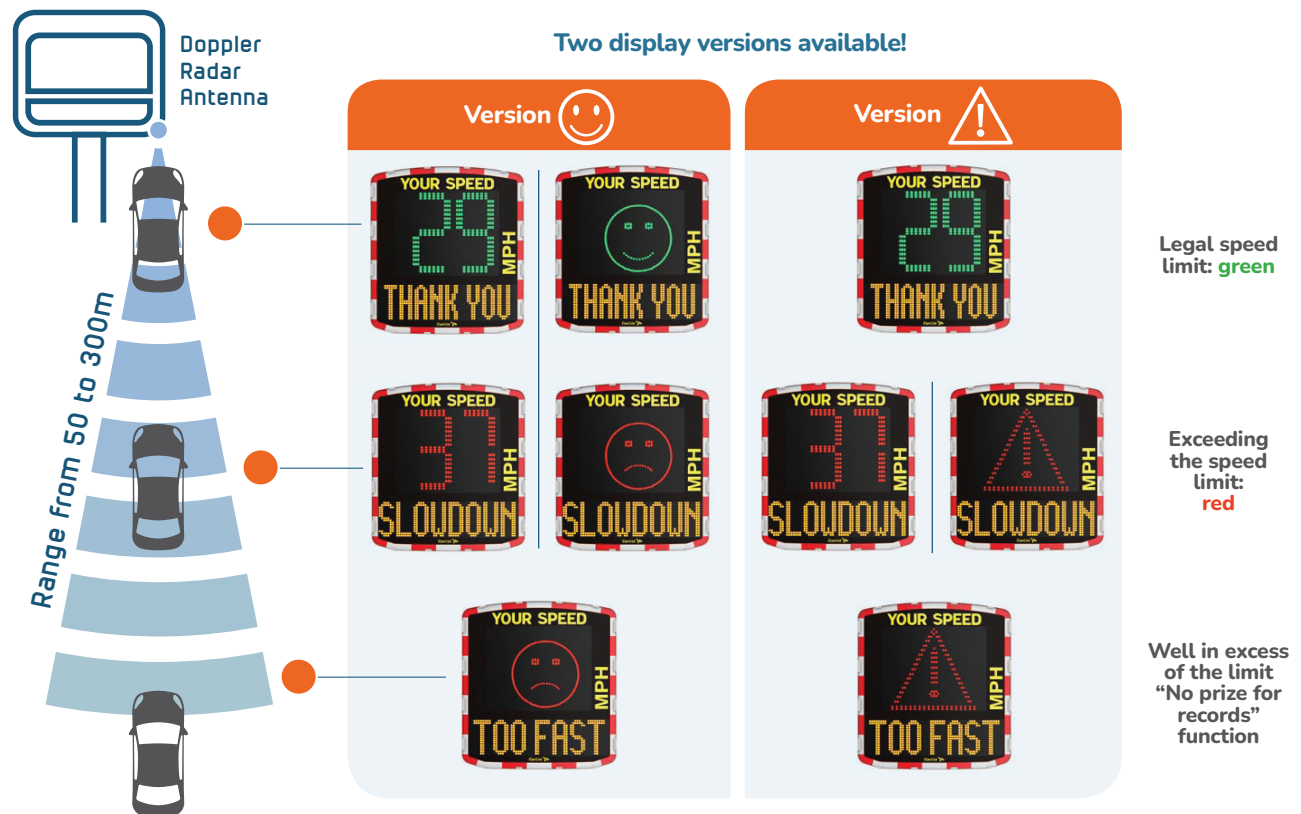


Accurate, long range Doppler radar antenna

This tried-and-tested technology used in our radar speed displays enables us to guarantee accurate detection at ranges up to 300 meters, a wide detection angle of 33° and an accuracy of +/- 1%. **The longer the detection range, the more the driver comes face-to-face with their speed and the bigger the radar's effect!**

The different interactions between EVOLIS Vision and the motorist

The two-tone display, refreshed every second, ensures a strong impact on the motorist. It is green when the speed limit is respected, and red when it is exceeded.



A CONNECTED RADAR FOR HIGH-PERFORMANCE ANALYSIS

The EVOLIS Vision radar doesn't stop at warning drivers. The integrated software lets you manage your equipment with your own resources and record and analyze traffic data in your community.

How do you communicate with your radar?

Through your PC, you can exchange data with your radar via USB cable (included) and Bluetooth®. You can also connect to your radar via **your tablet or smartphone under Android/iOS.**

Spy mode: the smart way to analyze data



The extremely useful "spy" function lets you **compare the radar unit's traffic data** in the on and off modes. With this system, the EVOLIS Vision radar doesn't display speeds but still records the traffic data.

A software suite to analyze your traffic data and prove the effectiveness of the radar speed sign

Configure your radar easily and retrieve its recorded data with our software package (unlimited access license): number of vehicles time stamped to the nearest second, speed in both directions, average and maximum speeds, etc.

It can also output your data in graphic form: pie charts, diagrams, graphs, etc., **providing you with precious information on road safety in your town or village.** All the data can be exported as an Excel, CSV, or PDF file.



Discover Option Connect

The Connect box provides the EVOLIS radar with remote connectivity using the 4G network. Easy to implement, it is installed directly inside the unit by the user. The Connect box offers easy management of your EVOLIS radar as well as unparalleled practicality when managing your statistical data.

With its «all-inclusive» subscription, you can remotely access all your statistical data settings and the health status of your radar through our dedicated web platform.

DURABILITY AND LONG-TERM RELIABILITY

From Canada to New Zealand, across Europe, installations all over the world are proof that EVOLIS Vision radars are designed to work long term in any climatic condition.

Extremely durable housing

Made of polycarbonate-reinforced ABS resin, the one-piece housing guarantees perfect weatherproofing and protection of the components.

There are no screws to go rusty. The full-core anti-UV treatment ensures maximum service life.



Robust front face

Designed in polycarbonate and treated with an anti-reflective coating, it offers better visibility in all conditions.

Slightly curved, it protects the LEDs from all projectiles.



A 2-year warranty and a dedicated support team

The return rate of our radars under guarantee is less than 1%. In case of malfunction (except vandalism), we proceed with you to the diagnosis by phone and bring you the necessary support for the repair. Our team of specialists assists you with installation and use: telephone talk-throughs or onsite training are both possible.

An extended warranty for your peace of mind

At the end of the 2-year warranty period, we offer you a warranty extension including:

- The repair of the equipment in the event of a malfunction, including parts, labour and transport
- Updating of on-board firmware and user software
- Telephone assistance to answer your questions regarding the use of the device.

Thanks to this warranty extension, you can rest assured that your Radar Speed Sign will remain a constant ally in reducing speed on your roads.



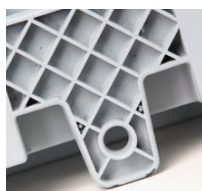
A SIMPLE AND A SAFE INSTALLATION

The EVOLIS Vision is cleverly designed to enable installation and relocation in a matter of minutes on any existing support structure by a single member.

Easy installation built into the design

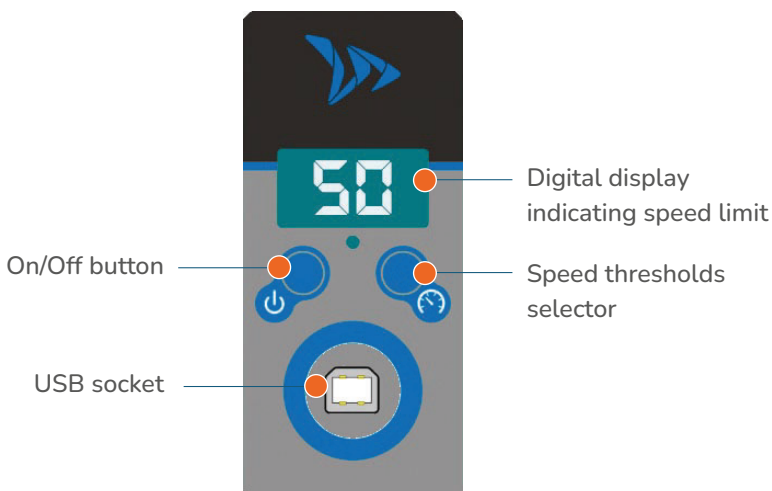
Delivered pre-configured and ready to go, the EVOLIS Vision has been designed to make it easy to install and use:

- Weighs only 9.2kg, allowing easy manipulation without heavy equipment
- Large detection angle of 33° for installation without orientation of the radar
- Universal mounting bar
- Specific supports that fit any type of installation
- Able to be secured by padlock for added security



Setting up: an interface for pre-selecting speed limit

Configuration directly on the radar:



Where to place them for maximum effect?

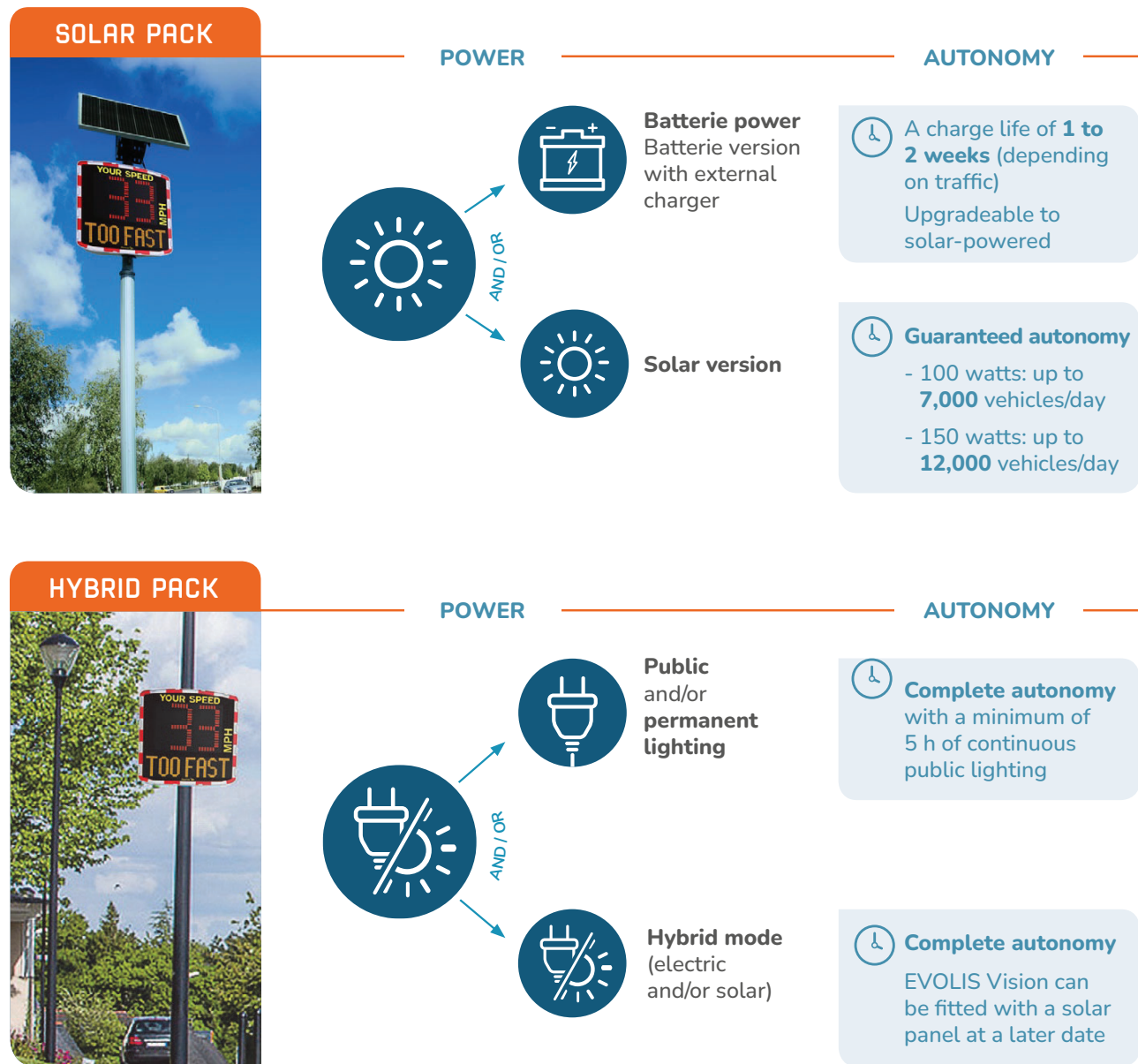
To achieve significant speed reductions, drivers need to be reminded of their speeds for as often as possible. Town entrances, village main roads, approaches to schools - for maximum effectiveness, the best positions are:

- Locations visible from a substantial distance (50 to 200 meters)
- Locations providing a clear line of sight to allow the antenna to detect individual vehicles across a longer distance (avoiding trees, crossroads, car parks, etc.).



FOUR POWER SUPPLY MODES FOR ADAPTABILITY TO ALL LOCATIONS!

Two versions of EVOLIS Vision with four low-energy power supply modes are available for adaptability to all your town's situations and all climatic conditions.





TECHNICAL CHARACTERISTICS

DISPLAYS	Speed Digits	3 digits (0 to 199) Dimensions: 380 x 450 mm Colour: green / amber / red Visibility: 3-LEDline thickness
	Smileys	Colour: green / red Dimensions : 300 x 300 mm
	Message/Graphic display (excluding EVOLIS Mobility)	Dimensions: 160 x 640 mm (H x W), 1 line of 8 characters / 2 lines of 11 characters Colour: amber Programmable messages – text and pictograms
	LEDs	OSRAM C.M.S high-luminosity, ultra-low consumption Service life > 100,000 hours
	Photosensitive cell	High-precision sensor for adaptation to the light
DOPPLER RADAR ANTENNA	Range	Up to 300 metres
	Accuracy	within 1%
	Angle of detection	33 degrees
	Frequency	24.200 GHz
TRAFFIC STATISTICS	Analysis	In both traffic directions (incoming/outgoing)
	Data	Average and maximum speeds, number of vehicles, time stamps, percentiles (V30/V50/V85)
	Memory	16 Mo, 5 million vehicles recorded
	Operation	With the software package. Output exportable in Excel, CSV, or PDF files.
SETTING UP	Local	USB and Bluetooth® (PC or Android/iOS mobile appliance with mobile app) Prerecorded speed bands with selection interface
	Remote	4G modem with Web interface (operational status of appliance and statistical analysis)
HOUSING	Dimensions	710 x 770 x 160 mm (W x H x D), with two battery slots
	Weight	9.2 kg (excl. batteries)
	Material	ABS resin, anti-UV, one-piece injection moulded body
	Colour	Grey, through dyed
	Ingress protection	IP65
	Security	Lock and specific key, also provision for padlock
	User access	External access to batteries, speed change interface, and USB port. Secured by two locks
FRONT FACE	Material	Polycarbonate with nonreflective surface
	Decoration and text	Regulatory red and white border - Silkscreened text "Your speed" Reverse silkscreen printing
	Shape	Convex for optimum protection against projectiles
POWER SUPPLY	Battery	Lead-acid 12V, 22Ah Weight: 6.2kg Dimensions: 181 x 76.2 x 167mm (L x W x H)
	Charging by solar panel	100 watts Monocrystalline high-output cells Dimensions: 806 x 680 x 35 mm (L x W x H) Smart charging management
	Charging from street lighting or grid	Internal power 220 V Smart charging management Integrated protection fuse
COMPLIANCE	European standards	Directive RED 2014/53/EU Directive RoHS 2011/65/EU Directive WEEE 2012/19/EU

A COMPREHENSIVE RANGE FOR ROAD SAFETY AND LOCAL COUNCIL COMMUNICATION

Drawing on its expertise in radar speed displays, Elan City capitalizes on its know-how and flair for innovation by expanding into other areas of display, including municipal information and road traffic management. The priority remains the guarantee of reliability, durability, toughness, and ease of installation and use.

EVOLIS®

The most effective radar speed display in the world, providing the highest efficiency

- Significant, lasting decrease in speeding
- Recording of traffic statistics in both directions
- Bluetooth® and/or 4G communication
- Available with solar and/or electrical power supply



EVOLIS Vision



EVOLIS Mobility

EVOFLASH

A beacon to boost your existing road safety signage

- Triggering on vehicle detection and/or overspeed
- Adaptable to all support posts: universal fastening and solar self-sufficiency



EVOCITY

The only electronic information display that can run on 100% solar power or public lighting

- Excellent reading quality in all conditions of light
- Versatile: can be relocated



Find out more by consulting your assigned sales representative



A TEAM LOCAL COUNCILS HAVE LEARNT TO COUNT ON



Elan City has been designing, manufacturing, and distributing products to fulfil the needs of local authorities for over 20 years. We are first and foremost a team focused on customer satisfaction, with a strong commitment to tackling issues that lead to improvements in local road safety.

Founded in 2005

50 staff

Nearly 20.000 towns and villages equipped and nearly 50.000 units in operation

Elan City, the safety and security partner

It doesn't matter whether you are a municipality, a district council, a county council, or a big city: our experts with their solid experience in the trade (7 years on average) will bring you unmatched effectiveness in the materialization of all your projects.



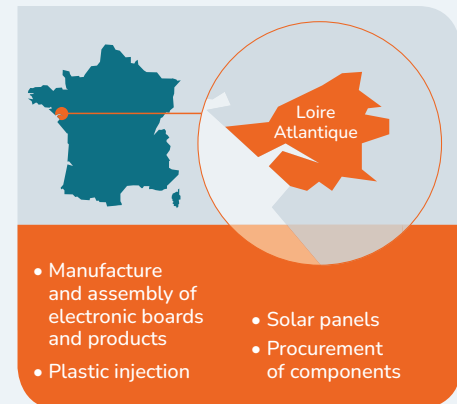
Many private sector enterprises also trust us for securing access to their production sites. EVOLIS can be adapted to all situations.



100% high-quality French manufacture



All our second-tier suppliers are also French and ISO 9001 certified. By operating stringent checks at each stage, we are able to guarantee you consistent optimum quality.



Furthermore, we are fully committed to complying with European environmental regulations. Our products comply with RoHS and WEEE directives, ensuring environmentally friendly and responsible management of electronic waste.

Additionally, a specialized waste treatment channel is in place to guarantee their recycling in accordance with environmental standards.

