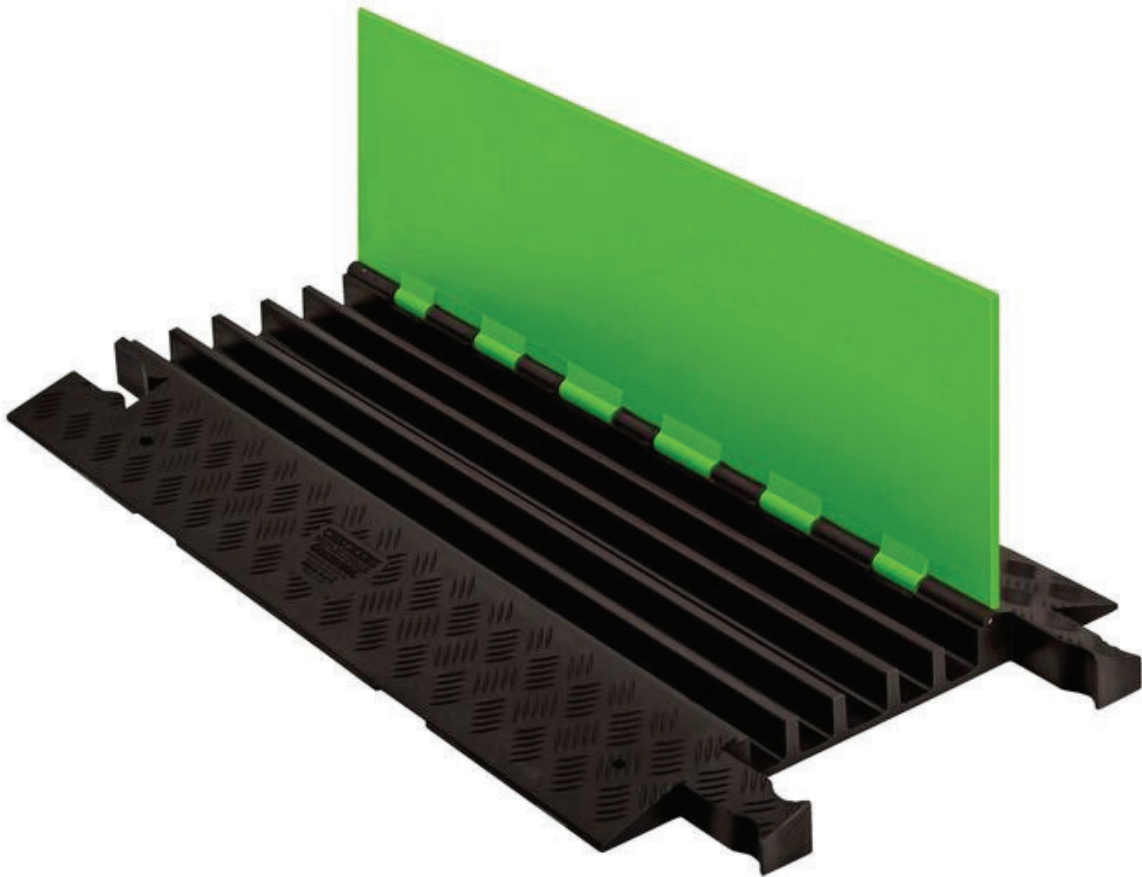


5-Channel Guard Dog® Cable Protectors for 1.325" Lines, SafeRay™ Hi-Viz Green Lid/Black Base - GD5X125-FLG/B

Product Images



Short Description

- Protects cables and hoses up to 1.325" outside dia.

- SafeRay™ Technology in fluorescent green provides the best day and night visibility
- Dog Bone® connectors to extend to any desired length
- Reinforced hinged lid for easy cable placement
- All-weather polyurethane construction
- Patented 5-bar tread surface for maximum traction
- Includes four through-holes for temporary mounting
- Ideal for use in amusement parks, entertainment venues, sporting events, and most public, commercial, industrial, construction, and utility applications
- Custom cable protectors are available. [Get a quote here.](#)

Description

The Hi-Viz Fluorescent Green Guard Dog 5-Channel Cable Protector (model GD5X125- FLG/B) features a hinged lid, a modular, interlocking design, and the capacity to protect up to five cables and hoses with an outside diameter of up to 1.325". Its all-weather polyurethane construction gives it unmatched durability, and with the use of Dog Bone connectors, it can extend to any length. It also features a 5-bar tread surface, ensuring maximum traction for both vehicles and pedestrians.

Custom cable protectors can be made with different colors and embossed logos. [Get a quote with your specific requirements.](#)

The fluorescent green coloring was created specially for situations requiring high visibility, using SafeRay™ Technology that provides the best day and night visibility. It features a UV reflective pigment that is added to the urethane blend during production to ensure visibility even in low-light or nighttime applications.

Because of its durability, it's equally suited for both commercial and industrial applications. Use it to keep electrical cables at an amusement park out of harm's way or protect critical hose lines from passing vehicles at an industrial site. Either way, it's more than up to the task, and its four through-holes ensure it can easily be secured to the base surface for a longer-term installation.

Customers use the GD5X125 model to maintain compliance with NEC Article 525 and OSHA 1910.305 regulations, and more. Each cable protector includes two warning labels for added precautions and safety - a trip hazard warning and an electrical power hazard warning. It is Ideal for use in amusement parks, entertainment venues, sporting events, and most public, commercial, industrial, construction, and utility applications.

Cable protectors ship assembled and ready for immediate use.

Specifications

Model No	GD5X125-FLG/B
Color	Lime Green
Quantity Included	1
Pallet Quantity	50
Load Capacity Per Axle	21000 lbs
Load Capacity Per Tire	10500
Length (Inches)	39.5
Width (Inches)	19.5
Height (Inches)	2.13
Max Cable Outside Diameter (Inches)	1.325
Number of Channels	5-Channels
Connector Type	Dog Bone Connector
Channel Width	1.339

Prop 65

⚠️WARNING: This product can expose you to chemicals including Carbon Black, Titanium Dioxide, Formaldehyde, and Benzyl Butyl Phthalate, which are known to the State of California to cause cancer and birth defects or other reproductive harm. For more information go to www.P65Warnings.ca.gov..