

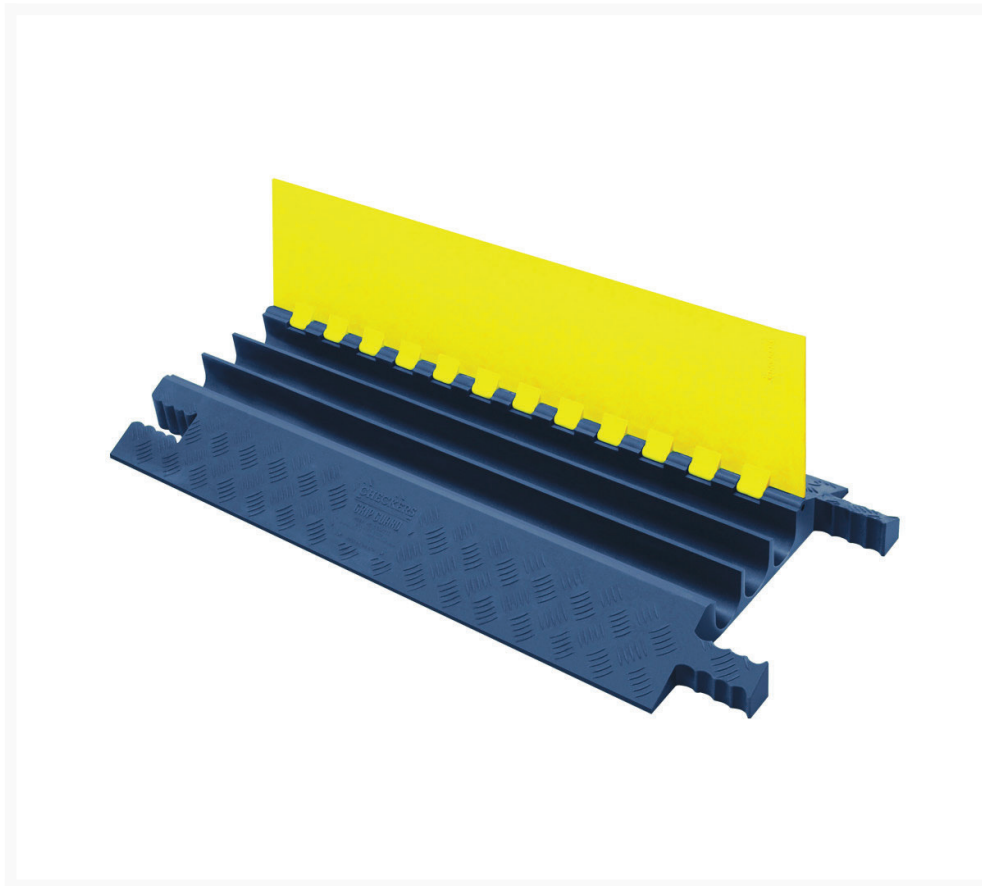


01905 794 875
StartSafety.uk
sales@startsafety.uk



3-Channel Grip Guard® Cable Protector for 2.25" Lines, Yellow Lid/Gray Base - GG3X225-Y/GRY

Product Images



Short Description

- Only 23 lbs. - the world's lightest 3-channel cable protector by up to 50%!
- Gripper® Connector System with easy hand-conforming grip
- Snap Fit hinged lid. No fiberglass rod required to replace the lid.
- Patented* 5-Bar tread pattern for maximum traction
- Protects cables and hoses up to 2.25" outside diameter
- Made from tough, high impact absorbing, non-conductive polyurethane

- Resistant from oil, fuels and lubricants
- Recessed carrying handle molded in to the underside of the protector
- Optional Anti-Slip Traction Kit for use on slick surfaces
- Custom logo and colors available
- RoHS and SVHC Compliant
- Custom cable protectors are available. [Get a quote here.](#)

*Product intended to be used with cable inside and for light vehicle and pedestrian traffic. Not intended for use with forklifts.

Description

Weighing in at only 23 lbs, the Grip Guard 3-Channel Cable Protector is the lightest of its kind. Constructed of durable, high-impact, non-conductive polyurethane, it's also resistant to oils, fuels and lubricants. A recessed carrying handle molded into the protector's underside makes it easy to transport, and its Snap Fit hinged lid doesn't require a fiberglass rod for replacement.

Custom cable protectors can be made with different colors and embossed logos. [Get a quote](#) with your specific requirements.

The top of the protector features a patented 5-Bar tread pattern for maximum traction, and it includes an optional anti-slip traction kit for slick surfaces. Thanks to the Gripper Connector System, which features easy, hand-conforming grips, it's both modular and easily expandable. Finally, it's RoHS and SVHC compliant and available with a custom logo/colors.

Not intended for use with forklifts or heavy machinery.

Specifications

Model No	GG3X225-Y/GRY
UPC	812542020053
Color	Yellow Lid / Grey Base
Quantity Included	1
Load Capacity Per Axle	10000 lbs
Load Capacity Per Tire	5000
Length (Inches)	36
Width (Inches)	18.21
Height (Inches)	2.25
Max Cable Outside Diameter (Inches)	2.25
Number of Channels	3-Channels
Connector Type	Ergonomic Gripper Connector
Channel Width	2.25

Prop 65

⚠️ WARNING: This product can expose you to chemicals including Carbon Black, Titanium Dioxide, Formaldehyde, and Benzyl Butyl Phthalate, which are known to the State of California to cause cancer and birth defects or other reproductive harm. For more information go to www.P65Warnings.ca.gov.