

Applications



Attach a Skipper XS

The cord strap holder/receiver's major application is its cord strap, which can be used as a tourniquet to tightly attach to pillars. It can hold a Skipper XS unit.



Attach a tape end clip

The cord strap holder/receiver can also be used as a magnetic receiver. Both applications allow it to hold the Skipper XS or receive a tape end clip.

Skipper™

The total safety management solution



Made in the United Kingdom



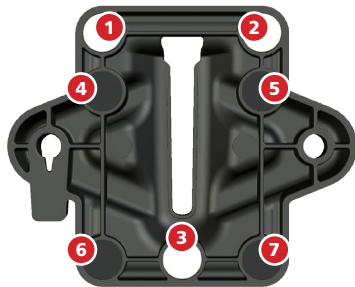
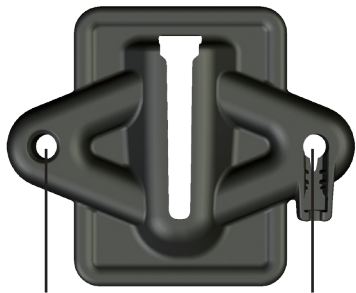
Usage guidelines



Skipper™

The total safety management solution

The Skipper **XS** cord strap holder/receiver



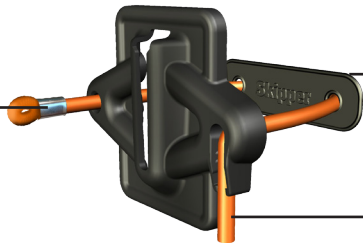
Thread hole
The cord strap should be fed through here.

Grip hole
The cord strap exits through here.

Magnets (1-3)
The reverse houses three magnets.

Protective pads (4-7)
Prevents damage to the attached structure.

Cord Stopper
Strops the cord strap going completely through the thread hole.



Surface protector
Prevents damage to the attached structure.

Cord
An elasticated cord to wrap around structures.

