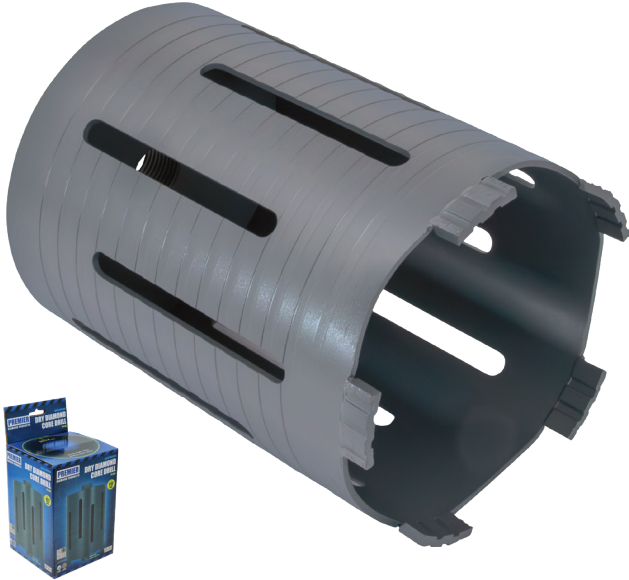


## P4-DC



Manufactured to EN13236



### DESCRIPTION:

The P4-DC dry diamond cores are suitable for all popular building materials such as general facing bricks, concrete blocks, breeze blocks, hand made bricks, building blocks and York stone.

### FEATURES:

- Laser welded dedicated UK bond system
- Spiral barrel
- ½" BSP female thread

### MACHINE SUITABILITY:

Diamond core drills & SDS plus drills with slipping clutch.

### STANDARDS:

EN13236: European Standard that regulates the safety requirements for super abrasive (diamond) products.

### USER TIPS:

- Ideally, use a dedicated dry diamond core machine with variable speed control and a slipping clutch
- No hammer action
- For harder materials and larger diameter cores use a slower RPM: for softer materials and smaller diameter cores use a faster RPM
- Clear debris from the hole at regular intervals to prevent the core from binding in the hole
- Do not force the core, let it do the work

### PART NO. DIMENSIONS

PART NO.	DIMENSIONS
DC12730	38 x 150mm
DC12731	42 x 150mm
DC12732	48 x 150mm
DC12740	52 x 150mm
DC12750	65 x 150mm
DC12760	78 x 150mm
DC12770	107 x 150mm
DC12780	117 x 150mm
DC12790	127 x 150mm
DC12791	152 x 150mm

### PACKAGING DETAILS:

Full colour corrugated cardboard box.



■ IDEALLY SUITED     UNSUITABLE  
■ OCCASIONAL USE

### MATERIALS

ALUMINIUM	
ASPHALT	
ASPHALT OVER CONCRETE	
BRICKS - CLASS A ENGINEERING	
BRICKS - CLASS B ENGINEERING	
BRICKS - STANDARD FACING BRICKS	
CEMENT FIBRE BOARD	
CAST IRON	
CLAY PRODUCTS	
COMPOSITE CLADDING & PANELS	
CONCRETE - BEAMS, KERBS, PIPES & SLABS	
CONCRETE - BLOCK PAVING	
CONCRETE - FLAG STONES	
CONCRETE - FLINT AGGREGATE	
CONCRETE - GENERAL PURPOSE	
CONCRETE - GREEN (up to 24 Hours Old)	
CONCRETE - HEAVY STEEL REINFORCEMENT	
CONCRETE - LIGHT STEEL REINFORCEMENT	
CONCRETE - ROOF TILES	
CONCRETE BLOCKS - LIGHTWEIGHT 3 TO 7 NEWTON	
CONCRETE BLOCKS - MEDIUM DENSITY 7 TO 12 NEWTON	
CONCRETE BLOCKS - SOLID DENSITY 12+ NEWTON	
CEMENT SCREED	
EARTHSTONE WORKTOPS	
FIBREGLASS	
GLASS REINFORCED PLASTIC (GRP)	
GRANITE - BLOCKS & WORKTOPS	
GRITSTONE	
GROUNDWORK - HARD SOIL	
LAMINATED PRODUCTS	
LIMESTONE	
MARBLE - BLOCKS & WORKTOP	
MORTAR RAKING	
PLASTIC (PVC, PE, PP, PC & COMPOSITES)	
QUARTZ WORKTOPS	
RUBBER	
RAILWAY SLEEPERS	
SANDSTONE - ABRASIVE	
SANDSTONE - INDIAN	
STEEL SECTION - PIPES & BARS	
TILES - CERAMIC	
TILES - GRANITE	
TILES - LIMESTONE	
TILES - MARBLE	
TILES - PORCELAIN	
TILES - 20mm EXTERIOR PORCELAIN	
TILES - SLATE	
TREE ROOTS	
WOOD	
YORK STONE	