



Threshold Drain

A beautiful product that will add the finishing touch to your project.

Mini Threshold Drain



An aesthetic slim doorway threshold drain for domestic level projects from Alusthetic. Main uses include patios, pathways, walkways, thresholds, block paving (not trafficked areas). Internal or external.

Manufactured from extruded plastic, complete with either aluminium heel guard grating in silver or black, suitable for pedestrian traffic; steel CorTen grating for a rustic look; or stainless steel that is suitable for swimming pools and sanitary areas.

With its discreet slim 65mm width and 60mm height, this boasts a desirable channel for any threshold, patio or non-trafficked application, helps eliminate water pooling at property entrances, grounds and surrounding areas.

The Alusthetic system has a width of 65mm and is available in 1m lengths with a full range of accessories which include the bottom connector, outlet end cap and corner unit.

The system is compliant with Part M of the Building Regulations and manufactured and monitored according to standard NBN EN 1433:2002-DOP.

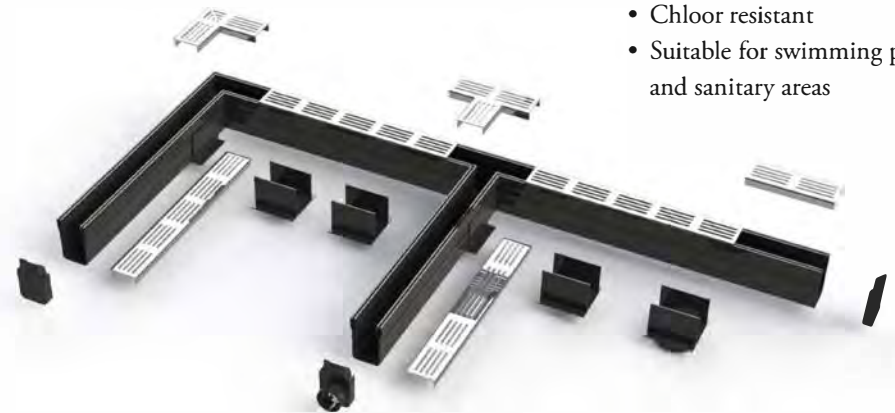


Product Features

- Easy to install
- Simple connection to standard underground drainage via 50mm or 80mm outlet
- Removable heel guard
- Fully compliant and certified to load class A 15 BS EN 1433:2002
- Compliant with Part M of the Build Regulations for England and Wales

Stainless Steel Exclusive

- Chlorine resistant
- Suitable for swimming pools and sanitary areas

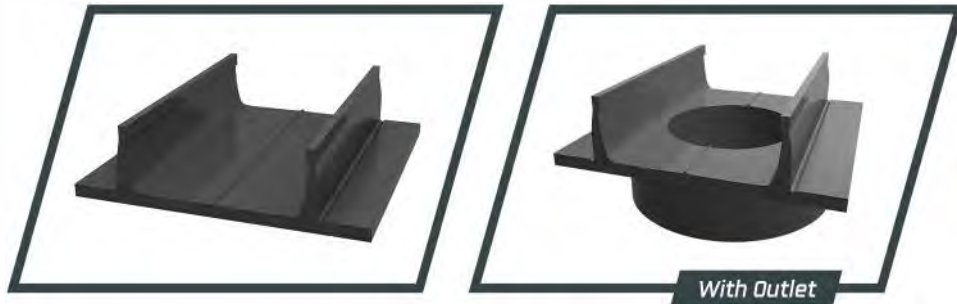


Available Grating Profile



Accessories

Alusthetic Mini Bottom Connector and Connector Outlet



This Alusthetic Threshold Drain Bottom Connector will allow easy connection between two 1000mm length channel drain bases for a safe, secure and solid hold. It is designed for use in properties to eliminate any water from pooling at external doors or to provide additional drainage.

The threshold is only 65mm wide and sits flush to the floor for maximum discretion, allowing water to be drained away quickly and efficiently. A long lasting and aesthetic design to compliment any project. There is also a 80mm outlet version to allow connectivity to the drainage pipe below.

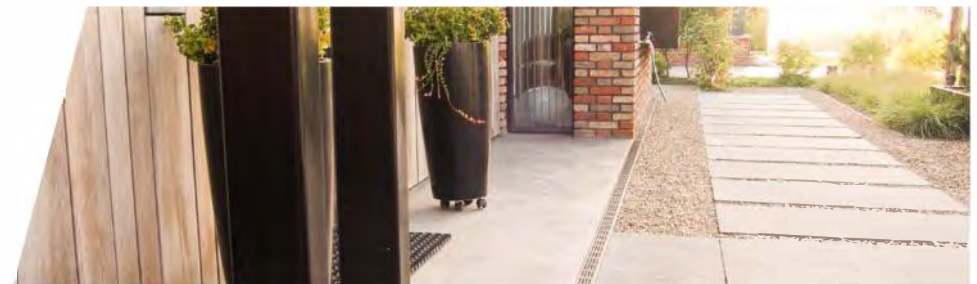
Alusthetic Mini Channel End Cap and End Cap Outlet



This Alusthetic Closing End Cap is to cap the channel drain system at either end. Available with or without a 40mm Horizontal Dia Outlet.

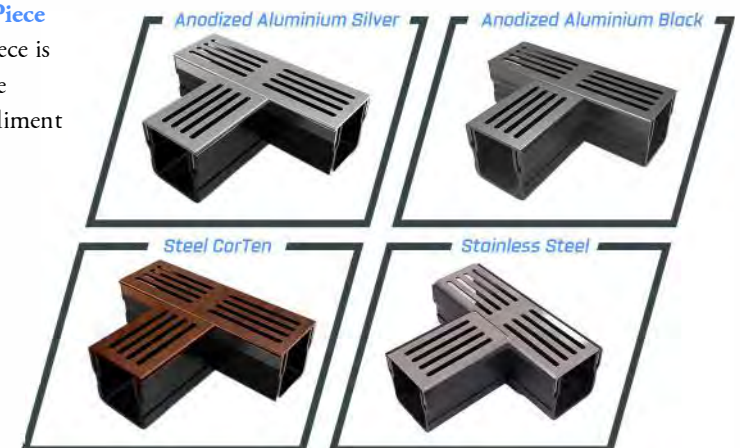
AlustheticMini Corner Units

This Alusthetic Corner Unit helps to seamlessly take the drain around corners and angles.



Alusthetic Mini Tee Piece

This Alusthetic Tee Piece is for additional drainage design scope to compliment this aesthetic range of threshold drains.



Installation Instructions

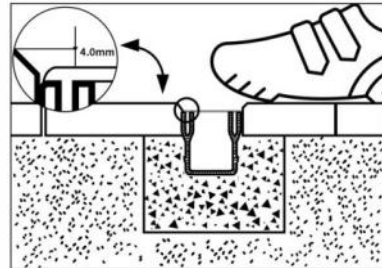
Alusthetic threshold drain that consists of a plastic (PVC) channel element with a design grate of aluminium silver, aluminium black, steel CorTen or stainless steel.

The threshold drain and grate is used around the home and in areas with low or no traffic.

You can drain the water from the threshold drain to the sewer or infiltration system. This can be done via a side or bottom outlet.



Step 1 Alusthetic Threshold Drain has the option of a side or bottom outlet. The side outlet is integrated in the end plate, the bottom outlet is integrated in a connecting piece.



For the bottom spout, you need to drill a Ø45 mm hole in the bottom of the drainage channel using a hole saw.

To do this, carefully determine where you want to place the connection coupling piece.

Attention

Connect a maximum of 6 meters of threshold drainage channels to a bottom outlet and a maximum of 5 meters to a side outlet. You can prevent odours by installing a siphon when connecting to the wastewater sewer.

Step 3

Apply stabilised sand in the trench in the ratio 1 : 3 (cement : sand).

Adjust the mixture to the desired height.

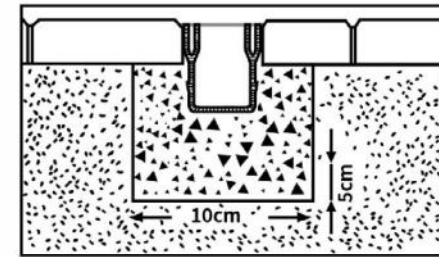
Click the connecting pieces around the channel elements and adjust to the correct height.

Fill the trench to the bottom of the pavement with sand cement.

Always leave the grate in the channel element!

Step 4

Carefully compact the foundation strip around the channel, leaving the channel in its original form.



Step 5

You can shorten the channel with grate to any length you desire with a saw. File after cutting the sharp ends.

Step 6

The end plates are attached to the ends of the channel. Due to the difference in the expansion coefficient of plastic (channel) and grate, it is possible that the length of the channel differs lightly from the length of the grate.

Tips

- ✓ With new paving, we advise you to tension a wire to determine the height level.
- ✓ If you install the channel in existing paving, we advise you to make a wooden template with the desired height, which you can strike off.
- ✓ When the channel is laid along an upright wall, the flaps of the connecting piece must be cut off on that side.

Depending on the chosen paving, the channel on the side can be supplemented with street sand or stabilised sand.

All plastic parts can be connected to each other in a waterproof manner using PVC glue.

Max flow rate: 220L/m

Step 2 Make a trench of approx. 15 cm deep for the foundation. The foundation must have minimum dimensions: 5 cm high and 10 cm wide.

www.alusthetic.co.uk

