

START  TRAFFIC

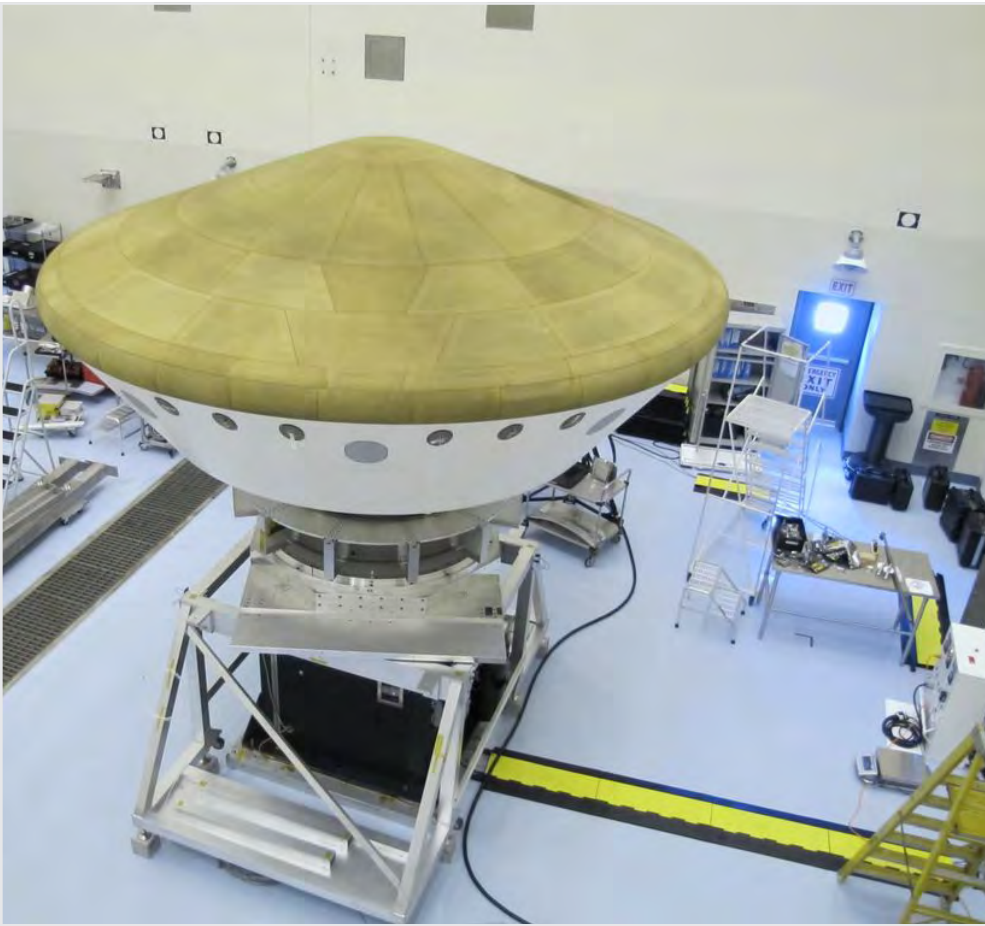
# LINEBACKER®

CABLE MANAGEMENT

## YELLOW JACKET SERIES 5-CHANNEL CABLE PROTECTOR PRODUCT INFORMATION BROCHURE







PICTURED: YJ5-125 IN USE)

Checkers' Linebacker Cable Management offers the most extensive line of high performance cable/hose protection products in the world. These durable cable protection systems provide a safer method of passage for pedestrian traffic, vehicles and heavy duty equipment while protecting valuable electrical cables, cords and hose lines from damage.

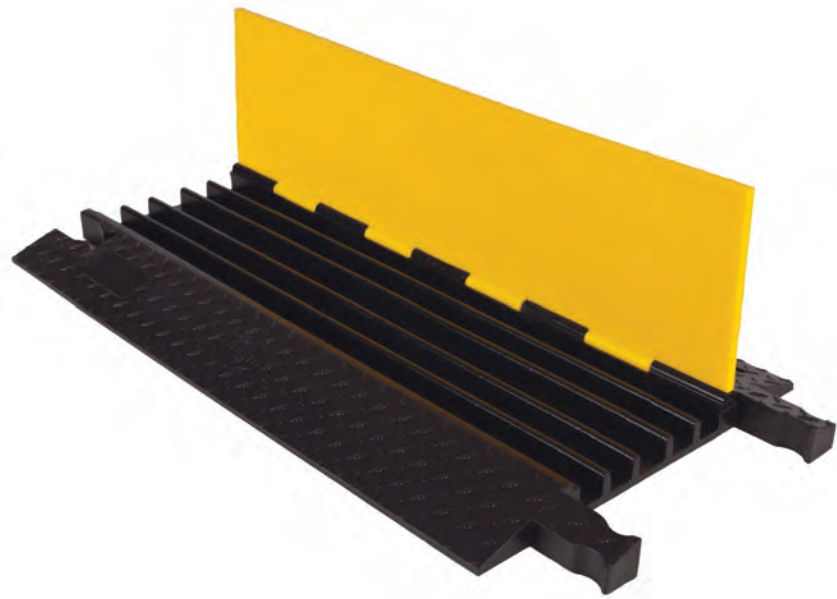
To fit the needs of a wide variety of applications, we offer lidded models, drop over models, open top models, and low profile models constructed from all-weather polyurethane. We also offer rubber duct models for light applications.

- **World's largest cable protector manufacturer**
- **Linebacker cable management systems are manufactured in the USA in Broomfield, CO**
- **We offer extensive accessories, such as ADA/DDA compliant access ramps, protector bridges, 45 & 90 turns and end caps**
- **Polyurethane construction is lighter and more durable than rubber imitations in extreme weather conditions**
- **Universal safety colors alerting all type of traffic to the product's presence**
- **Satisfies state and federal regulatory agencies**
- **Customized solutions, including logos molded into the product**
- **Multiple channel options so each cable and hose can have its own dedicated channel**
- **Non-conductive material insulates and protects cords/cable, as well as people**

**5-CHANNEL CABLE PROTECTOR** with hinged lid provides a safer crossing in high volume traffic areas while protecting valuable electrical cables and hose lines from damage. Modular interlocking design is ideal for use in industrial, commercial, and public applications.

**Material:** UV Stabilized Polyurethane

- Protects cables and hoses up to 1.0" outside dia.
- The "original" cable protector
- Dog Bone Connectors to extend to any desired length
- Thick lid and base allow for high volume of traffic
- Hinged lid for easy cable placement
- Features a load capacity of 32,600 lb./Axle (14,787 kg)



MODEL: YJ5-125

**APPLICATIONS**

- Civil Engineering and Construction
- Mining
- Military Sites
- Infrastructure and Utilities Maintenance
- Transmission
- Oil and Gas

## ACCESSORIES

**45° RIGHT TURN**  
MODEL: YJ5TR-125



**45° LEFT TURN**  
MODEL: YJ5TL-125



**END CAPS (Pair Only)**  
MODEL: YJ5EB-125



**45° RIGHT TURN**  
MODEL: YJ5X-125



Model	Length	Width	Height	Channel Width	Maximum Outside Diameter	Weight
YJ5-125	36 in. (91.4 cm)	19.75 in. (50.2 cm)	1.875 in. (4.76 cm)	1.375 in. (3.49 cm)	1 in. (2.54 cm)	28.2 lb. (12.8 kg)
YJ5TR-125	24 in. (61 cm)	19.75 in. (50.2 cm)	1.875 in. (4.76 cm)	1.25 in. (3.18 cm)	1.325 in. (3.37 cm)	14.2 lb. (6.4 kg)
YJ5TL-125	24 in. (61 cm)	19.75 in. (50.2 cm)	1.875 in. (4.76 cm)	1.25 in. (3.18 cm)	1.325 in. (3.37 cm)	14.2 lb. (6.4 kg)
YJ5EB-125	Female: 7.375 in. (18.7 cm) Male: 4.25 in. (10.8 cm)	20 in. (50.8 cm)	1.875 in. (4.76 cm)	1.25 in. (3.18 cm)	1.125 in. (2.86 cm)	4.05 lb. (1.8 kg) 3.45 lb. (1.6 kg)
YJ5X-125	28.5 in. (72.4 cm)	24.5 in. (62.2 cm)	1.875 in. (4.76 cm)	1.339 in. (3.4 cm)	1.325 in. (3.37 cm)	23.1 lb. (10.5 kg)



**START TRAFFIC**  
 Unit 30 North Bank  
 Berryhill Ind Est,  
 Droitwich, WR9 9AU  
**PHONE:** 01905 794 875

**EMAIL:** sales@starttraffic.uk

[www.starttraffic.uk](http://www.starttraffic.uk)

**START TRAFFIC**

A PRODUCT OF:



For more information visit: [www.checkers-safety.com](http://www.checkers-safety.com)

A dynamic, global team dedicated to protecting people, assets, and the environment.

**CHECKERS FAMILY OF BRANDS:**

