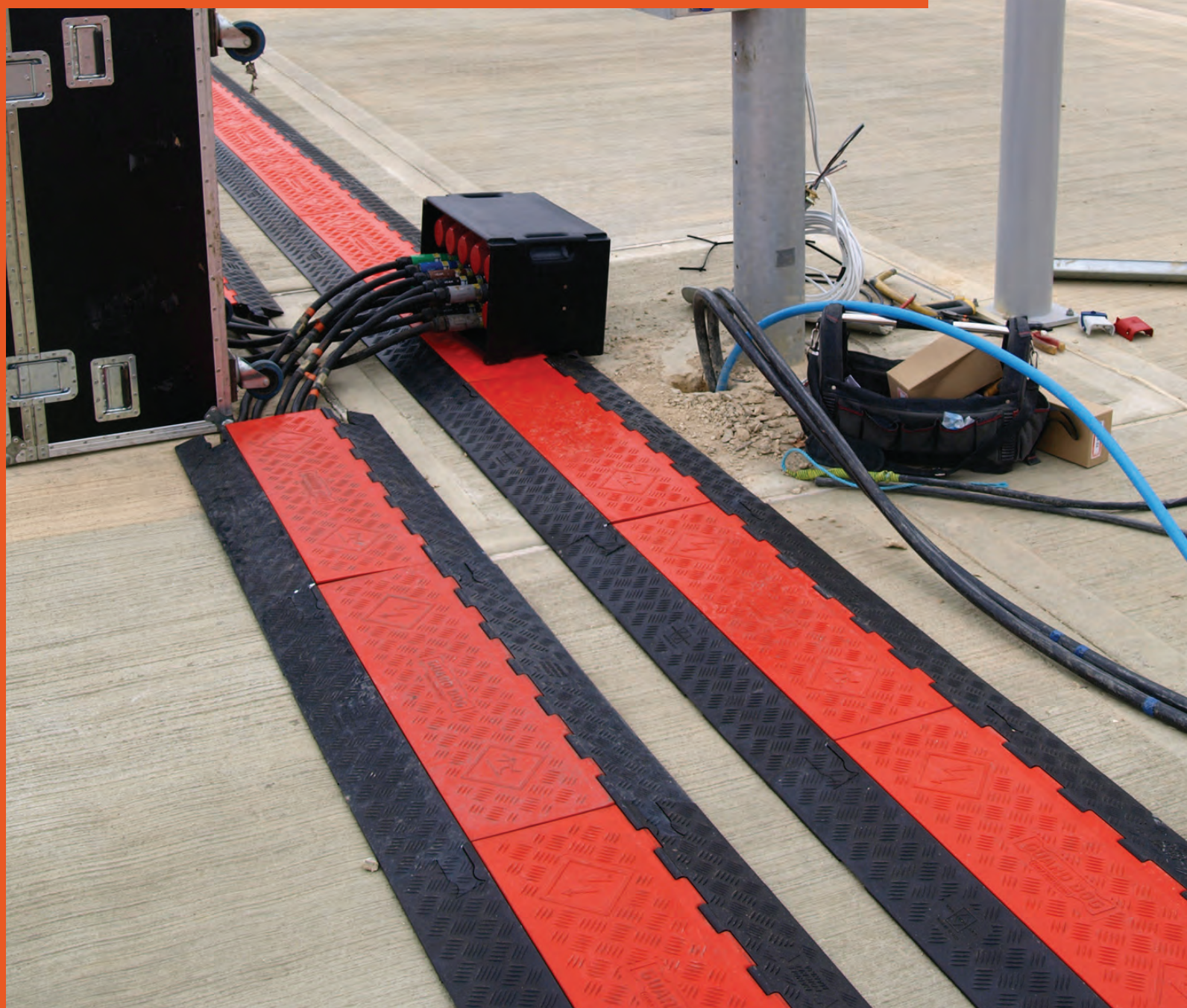


# LINEBACKER®

CABLE MANAGEMENT

## GUARD DOG SERIES 5-CHANNEL CABLE PROTECTOR PRODUCT INFORMATION BROCHURE





PICTURED: GD5X125 IN USE

Checkers' Linebacker Cable Management offers the most extensive line of high performance cable/hose protection products in the world. These durable cable protection systems provide a safer method of passage for pedestrian traffic, vehicles and heavy duty equipment while protecting valuable electrical cables, cords and hose lines from damage.

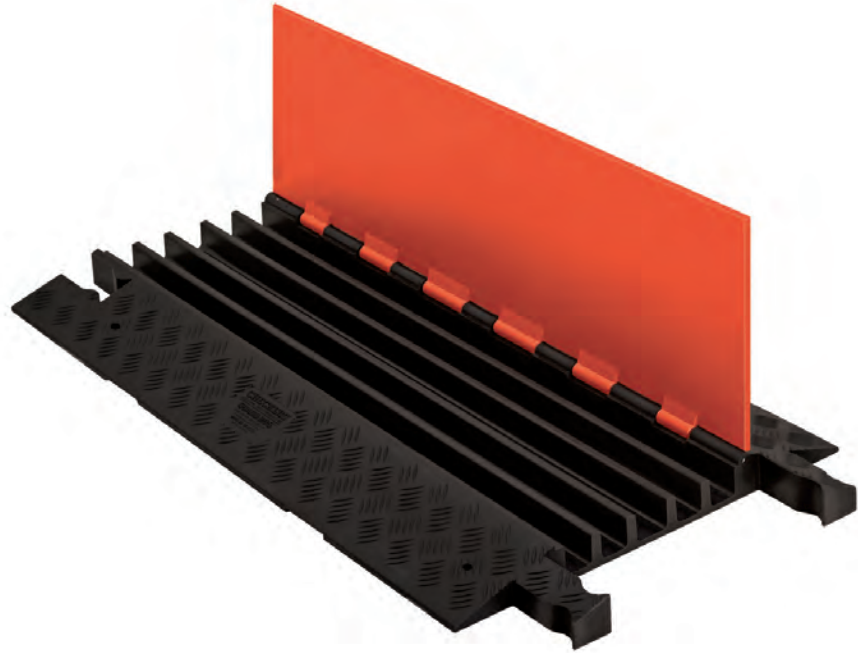
To fit the needs of a wide variety of applications, we offer lidded models, drop over models, open top models, and low profile models constructed from all-weather polyurethane. We also offer rubber duct models for light applications.

- **World's largest cable protector manufacturer**
- **Linebacker cable management systems are manufactured in the USA in Broomfield, CO**
- **We offer extensive accessories, such as ADA/DDA compliant access ramps, protector bridges, 45 & 90 turns and end caps**
- **Polyurethane construction is lighter and more durable than rubber imitations in extreme weather conditions**
- **Universal safety colors alerting all type of traffic to the product's presence**
- **Satisfies state and federal regulatory agencies**
- **Customized solutions, including logos molded into the product**
- **Multiple channel options so each cable and hose can have its own dedicated channel**
- **Non-conductive material insulates and protects cords/cable, as well as people**

**GUARD DOG SERIES 5-CHANNEL CABLE PROTECTOR** with hinged lid provides a safer crossing for vehicle and pedestrian traffic while protecting valuable electrical cables and hose lines from damage. Modular interlocking design is ideal for use in amusement parks, entertainment venues, sporting events, and most public, commercial, industrial, construction, and utility applications.

**Material:** UV Stabilized Polyurethane

- Protects cables and hoses up to 1.325" outside dia.
- Dog Bone Connectors to extend to any desired length
- Reinforced hinged lid for easy cable placement
- All-weather polyurethane construction
- Patented 5-bar tread surface for maximum traction
- Features a load capacity of 21,000 lb./Axle (9,526 kg)
- Available with an orange or black lid



MODEL: GD5X125

## APPLICATIONS

- Civil Engineering
- Construction
- Military Sites
- Infrastructure and Utilities Maintenance
- Transmission
- Oil and Gas

## ACCESSORIES

**45° RIGHT TURN**  
MODEL: GDT5X125-R

**45° LEFT TURN**  
MODEL: GDT5X125-L

**END CAPS (Pair Only)**  
MODEL: GDEC5X125

**CROSS OVER**  
MODEL: GDCR5X125



Model	Length	Width	Height	Channel Width	Maximum Outside Diameter	Weight
GD5X125	36 in. (91.4 cm)	19.75 in. (50.2 cm)	1.875 in. (4.76 cm)	1.339 in. (3.4 cm)	1.325 in. (3.37 cm)	21 lb. (9.6 kg)
GDT5X125-R	24.5 in. (62.23 cm)	19.75 in. (50.2 cm)	1.875 in. (4.76 cm)	1.339 in. (3.4 cm)	1.325 in. (3.37 cm)	11 lb. (5.0 kg)
GDT5X125-L	24.5 in. (62.23 cm)	19.75 in. (50.2 cm)	1.875 in. (4.76 cm)	1.339 in. (3.4 cm)	1.325 in. (3.37 cm)	11 lb. (5.0 kg)
GDEC5X125	Female: 8.75 in. (22.23 cm) Male: 5.25 in. (13.34 cm)	19.75 in. (50.17 cm)	1.875 in. (4.76 cm)	1.339 in. (3.4 cm)	1.325 in. (3.37 cm)	3 lb. (1.4 kg)
GDCR5X125	28.5 in. (72.39 cm)	19.75 in. (50.17 cm)	1.875 in. (4.76 cm)	1.339 in. (3.4 cm)	1.325 in. (3.37 cm)	23.1 lb. (10.5 kg)



**START TRAFFIC LTD**  
Unit 30 North Bank  
Berryhill Ind Est,  
Droitwich, WR9 9AU  
**PHONE:** 01905 794 875

**EMAIL:** sales@starttraffic.uk

[www.starttraffic.uk](http://www.starttraffic.uk)

**START TRAFFIC**

A PRODUCT OF:



For more information visit: [www.checkers-safety.com](http://www.checkers-safety.com)

Checkers Safety Group is committed to providing revolutionary product designs and visionary safety solutions that protect people, assets, and the environment.

CHECKERS' FAMILY OF BRANDS:

