

**START**  **TRAFFIC**

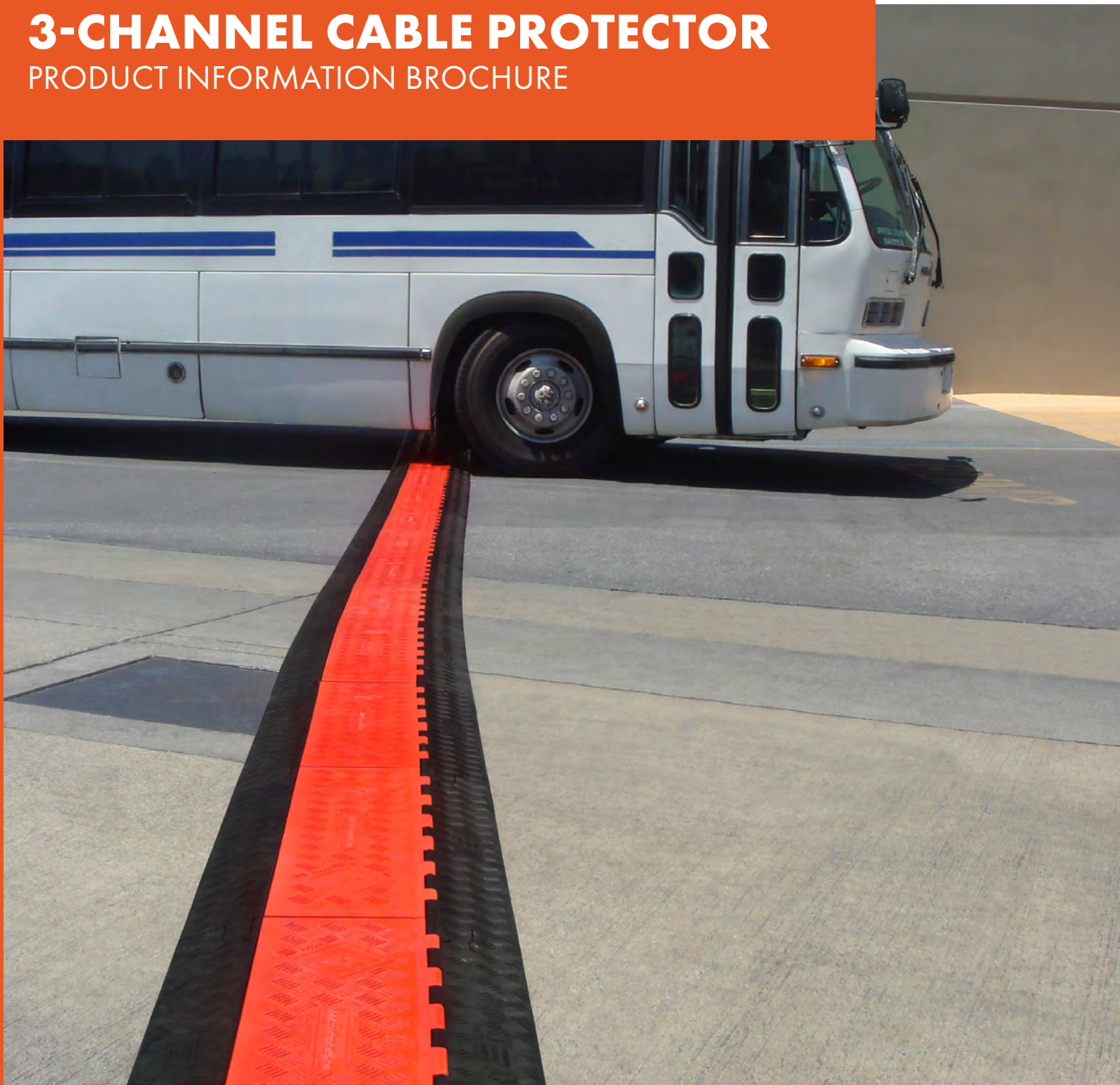
# LINEBACKER®

**CABLE MANAGEMENT**

**GUARD DOG SERIES**

**3-CHANNEL CABLE PROTECTOR**

PRODUCT INFORMATION BROCHURE





PICTURED: GD5X125 IN USE (TOP)  
GD3X225 IN USE (LEFT)

Checkers' Linebacker Cable Management offers the most extensive line of high performance cable/hose protection products in the world. These durable cable protection systems provide a safer method of passage for pedestrian traffic, vehicles and heavy duty equipment while protecting valuable electrical cables, cords and hose lines from damage.

To fit the needs of a wide variety of applications, we offer lidded models, drop over models, open top models, and low profile models constructed from all-weather polyurethane. We also offer rubber duct models for light applications.

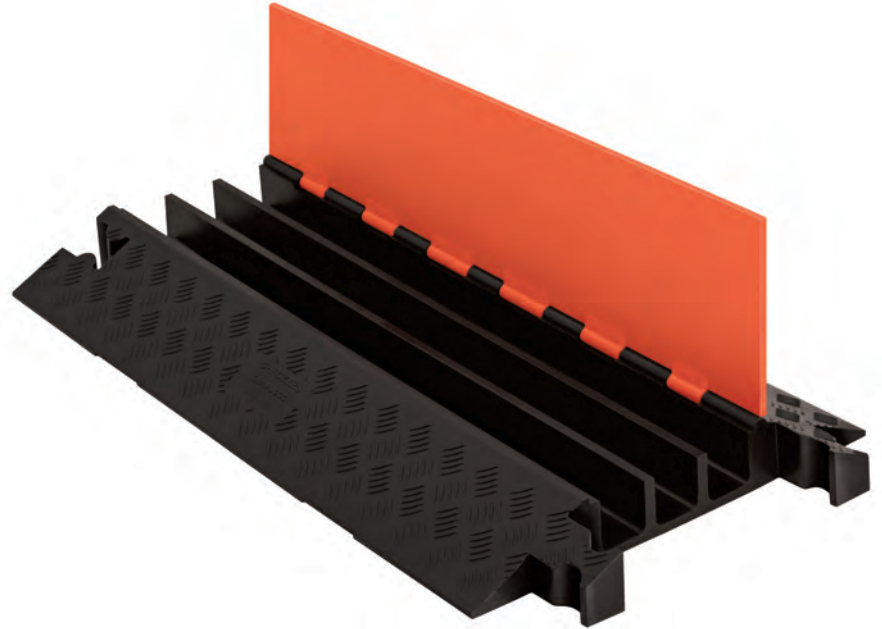
- **World's largest cable protector manufacturer**
- **Linebacker cable management systems are manufactured in the USA in Broomfield, CO**
- **We offer extensive accessories, such as ADA/DDA compliant access ramps, protector bridges, 45 & 90 turns and end caps**
- **Polyurethane construction is lighter and more durable than rubber imitations in extreme weather conditions**
- **Universal safety colors alerting all type of traffic to the product's presence**
- **Satisfies state and federal regulatory agencies**
- **Customized solutions, including logos molded into the product**
- **Multiple channel options so each cable and hose can have its own dedicated channel**
- **Non-conductive material insulates and protects cords/cable, as well as people**



**GUARD DOG SERIES 3-CHANNEL CABLE PROTECTOR** with hinged lid protects valuable electrical cables and hose lines from damage while providing a safer crossing for vehicle and pedestrian traffic. Modular interlocking design is ideal for use in amusement parks, entertainment venues, sporting events, and most public, commercial, industrial, construction, and utility applications.

**Material:** UV Stabilized Polyurethane

- Protects cables and hoses up to 2.25" outside dia.
- Dog Bone Connectors to extend to any desired length
- Reinforced hinged lid for easy cable placement
- All-weather polyurethane construction
- Patented 5-bar tread surface for maximum traction
- Features a load capacity of 28,420 lb./Axle (12,892 kg)
- Available with an orange or black lid



MODEL: GD3X225

## APPLICATIONS

- Amusement Parks
- Entertainment Venues
- Sporting Events
- Industrial
- Construction
- Utility

## ACCESORIES

**RAMPS**  
CPRP-3GD



**CONNECTOR**  
CPADACN-4/5-GD



Model	Length	Width	Height	Channel Width	Maximum Outside Diameter	Weight
GD3X225	36 in. (91.4 cm)	20 in. (51.0 cm)	3 in. (7.65 cm)	2.25 in. (5.72 cm)	2.25 in. (5.72 cm)	30 lb. (13.6 kg)
CPRP-3GD	36 in. (91.4 cm)	34.81 in. (88.42 cm)	2.88 in. (7.32 cm)	N/A	N/A	66 lb. (30 kg)
CPADACN-4/5-GD	7 in. (17.8 cm)	2.5 in. (6.35 cm)	1 in. (2.54 cm)	N/A	N/A	1 lb. (.45 kg)





**START TRAFFIC LTD**  
Unit 30 North Bank  
Berryhill Ind Est,  
Droitwich, WR9 9AU  
**PHONE:** 01905 794 875

**EMAIL:** [sales@starttraffic.uk](mailto:sales@starttraffic.uk)

[www.starttraffic.uk](http://www.starttraffic.uk)

**START TRAFFIC**

A PRODUCT OF:



For more information visit: [www.checkers-safety.com](http://www.checkers-safety.com)

Checkers Safety Group is committed to providing revolutionary product designs and visionary safety solutions that protect people, assets, and the environment.

CHECKERS' FAMILY OF BRANDS:

