

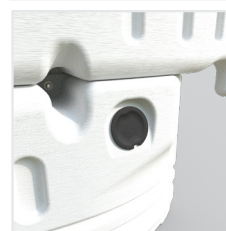
# CITYWall

## Description:

The CityWall is a 2-meter water-filled traffic barrier designed to enhance traffic management on major projects and road safety in urban areas. Filling points on either side allow a safe and quick filling process, whilst a removable bung in the base allows for easy emptying. The most unique feature is that the CityWall can be colour coded top and/or bottom, as well as large areas for logo embossing, resulting in enhanced corporate identity. It is a highly visible and robust barricade that helps to guide and control vehicular movement, whilst ensuring the safety of pedestrians and drivers alike.

## Features:

- Hook & Eye connection
- Stays connected at over 280° angular movement.
- Durable & impact resistant.
- Can be filled from either side for additional safety.
- Secure filling cap to prevent unwarranted access.
- Facility for the DoubleTop or Fence hoarding.
- Capacity of over 250 litres.
- Removable plug in the base for easy emptying.
- All-weather resistant - rain and UV Stable.
- Bespoke colours on either top or bottom section.
- Can be embossed with corporate logo.
- Manufactured from HDPE.



Fill Area



Run



DoubleTop



<b>Height:</b>	800 mm
<b>Weight Empty:</b>	21.5 kg
<b>Weight Filled:</b>	271.5 kg
<b>Overall Length:</b>	2295 mm
<b>Working Length:</b>	2040 mm
<b>Depth:</b>	350 mm

\*All weights are approximate

The information given on these sheets is typical of the product depicted it must not be interpreted as a guarantee of individual product performance and/or characteristics. We reserve the right to alter specifications and designs without prior notice. All measurements are in millimetres (mm)



FM 673547